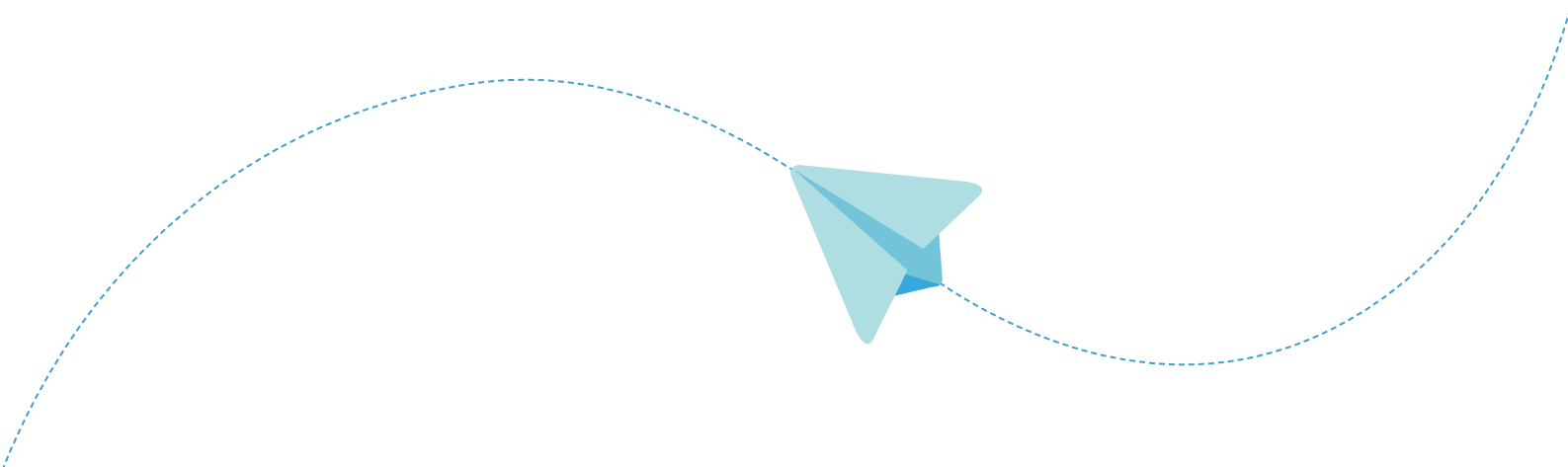




Postbode.nu API



Toermalijnring 320
3316 LC Dordrecht

+31 (0) 78 - 780 23 59
postkantoor@postbode.nu
postbode.nu

KVK: 61179264
BTW: NL854242090B01

Version	Date	Author	Description
1.0	21-02-2018	Mark Hameetman	Initiele document

○ AUTHENTICATIE

Via <https://app.postbode.nu/settings/api> kunt u uw eigen API key aanmaken en/of ophalen, deze key moet via de "X-Authorization"-header meegestuurd worden bij iedere request.

De header ziet er dan als volgt uit:

Content-Type: application/json

X-Authorization: XXXXXXXXXX-UW-API-KEY-XXXXXXX



METHODEN

○ GET MAILBOXES

Via deze call worden alle beschikbare mailboxen voor de gebruiker, behorende bij de API-Key weergegeven.

Request

Method	URL
GET	https://app.postbode.nu/api/mailbox/

Type	Params	Values
HEAD	X-Authorization	string

Response

Status	Response
200	[{ "id": 1, "Name": "Demomailbox", "vat_shifted": 0, "balance": 100.00, "available_balance": 100.00 }]



GET LETTERS

Ophalen van alle brieven in een betreffende mailbox

Request

Method	URL
GET	<code>https://app.postbode.nu/api/mailbox/[mailbox_id]/letters</code>

Type	Params	Values
HEAD	X-Authorization	<code>string</code>

Response

Status	Response
200	<pre>{ "id": 1, "envelope_id": 2, "service": "send", "status": "concept", "color": "full color", "printing": "simplex", "paper_weight": "80g", "paper_size": "A4", "tracking_code": null, "formatted_id": "PB00000001", "shipping_id": 1, "weight": 13, "pages": 1, "sheets": 1 }</pre>



POST LETTERS

Document verzenden via Postbode.nu

Request

Method	URL
POST	https://app.postbode.nu/api/mailbox/[mailbox_id]/letters

Type	Params	Values
HEAD POST	X-Authorization	<pre>String { "documents": [{ "name": "Documentnaam.pdf", "content": base64encoded file }], "envelope_id": 2, "country": "NL", "registered": false, "send": true }</pre>

documents (array)

Binnen documents geeft u de documenten mee die verzonden moeten worden, waarbij het eerste document een geldig adres moet bevatten dat zichtbaar is in het envelopvenster.

envelope_id (int)

Standaard kunt u envelop 2 gebruiken, een overzicht van beschikbare enveloppen kunt u vinden op <https://app.postbode.nu/mailbox/envelopes> onder de betreffende mailbox.

country (string)

De ISO-3166-2 geformatteerde landcode van het land van bestemming

registered (bool)

Aangetekende zending, bij true zal de zending aangetekend verzonden worden

send (bool)

Direct verzenden (**true**) of enkel toevoegen aan app.postbode.nu (**false**)

Response

Status	Response
200	<pre>{ "id": 1,</pre>



```

"envelope_id": 2,
"service": "send",
"status": "concept",
"color": "full color",
"printing": "simplex",
"paper_weight": "80g",
"paper_size": "A4",
"tracking_code": null,
"formatted_id": "PB10000001",
"shipping_id": 2,
"weight": 23,
"pages": 3,
"sheets": 3,
"pricing": {
  "sale_price": 1.99,
  "sale_price_in_vat": 2.408,
  "printing": {
    "name": "Print - Kleur \\/ Enkelzijdig \\/ 80g \\/ A4",
    "sale_price": "0.210",
    "sale_price_in_vat": "0.254",
    "type": "send_printing"
  },
  "envelope": {
    "name": "Verpakking - Onbedrukte envelop \\/ C5",
    "sale_price": "0.120",
    "sale_price_in_vat": "0.145",
    "type": "send_envelope"
  },
  "shipment": {
    "name": "PostNL (Brief 20 - 50 g) (Nederland) (24uur)",
    "sale_price": "1.660",
    "sale_price_in_vat": "2.009",
    "type": "send_shipping"
  },
  "vat": "0.418",
  "available_balance": "10.00"
},
"documents": [
  {
    "id": 1,
    "name": "Documentnaam.pdf",
    "source": "api",
    "pages": 3,
    "order": 0,
    "created_at": "2018-02-26 07:58:45",
    "updated_at": "2018-02-26 07:58:45",
    "deleted_at": null
  }
]
}

```



○ GLOSSARY

Conventions

- **Client** - Client application.
- **Status** - HTTP status code of response.
- All response are in JSON format.

Status Codes

All status codes are standard HTTP status codes. The below ones are used in this API.

2XX - Success of some kind

4XX - Error occurred in client's part

5XX - Error occurred in server's part

Status Code	Description
200	OK
201	Created
202	Accepted (Request accepted, and queued for execution)
400	Bad request
401	Authentication failure
403	Forbidden
404	Resource not found
405	Method Not Allowed
409	Conflict
412	Precondition Failed
413	Request Entity Too Large
500	Internal Server Error
501	Not Implemented
503	Service Unavailable

